



EXCEPTIONAL COMMUNITY HOSPITAL

COMPREHENSIVE SIGN PLAN

January 2022 [V.1]

19060 N John Wayne Pkwy | Maricopa, AZ 85139

PROJECT

Exceptional Community Hospital
19060 N John Wayne Pkwy
Maricopa, AZ 85139

SIGNAGE CONSULTANT

Associated Sign Company
3335 W. Vernon Ave.
Phoenix, AZ 85009
Ph: 602-278-8464
mshano@ascosigns.com

PARCEL INFORMATION

PARCEL NUMBER:

510-25-009M

ZONING:

2821 Commercial

JURISDICTION:

Maricopa

PURPOSE & INTENT

THE EXCEPTIONAL COMMUNITY HOSPITAL IS LOCATION ON A 1.94 ACRE SITE, CITY AND PRIVATELY OWNED GROUP OF PARCELS LOCATED JUST WEST OF THE INTERSECTION HONEYCUTT AVE. & US 347 (N MARICOPA RD. / N. JOHN WAYNE PKWY) .

THE INTENT OF THIS COMPREHENSIVE SIGN PLAN IS TO ALLOW THE EXCEPTIONAL COMMUNITY HOSPITAL TO INCREASE THE TOTAL NUMBER OF SIGNS PERMITTED ON ANY ONE ELEVATION. THE ARCHITECTURAL DESIGN OF THE HOSPITAL INCLUDES A "TOWER" (TALLER BUILDING SECTION) IN THE SOUTHEAST CORNER OF THE BUILDING. THE PLANS CALL FOR ILLUMINATED SIGNAGE ON NORTH & SOUTH ELEVATION OF THE TOWER TO PROMOTE INCREASED VISIBILITY FROM THE NEWLY CONSTRUCTED SECTION OF US 347. THE HOSPITAL AND ITS PATIENTS WILL BENEFIT FROM THE HIGHLY VISIBLE SIGNAGE ON THESE ELEVATIONS.

APPROVALS

1. PRIOR TO THE MANUFACTURE OF ANY SIGN, THE PROPERTY OWNER SHALL OBTAIN THE CITY OF MARICOPA'S APPROVAL. THE STEPS IN THIS APPROVAL PROCESS ARE AS FOLLOWS:

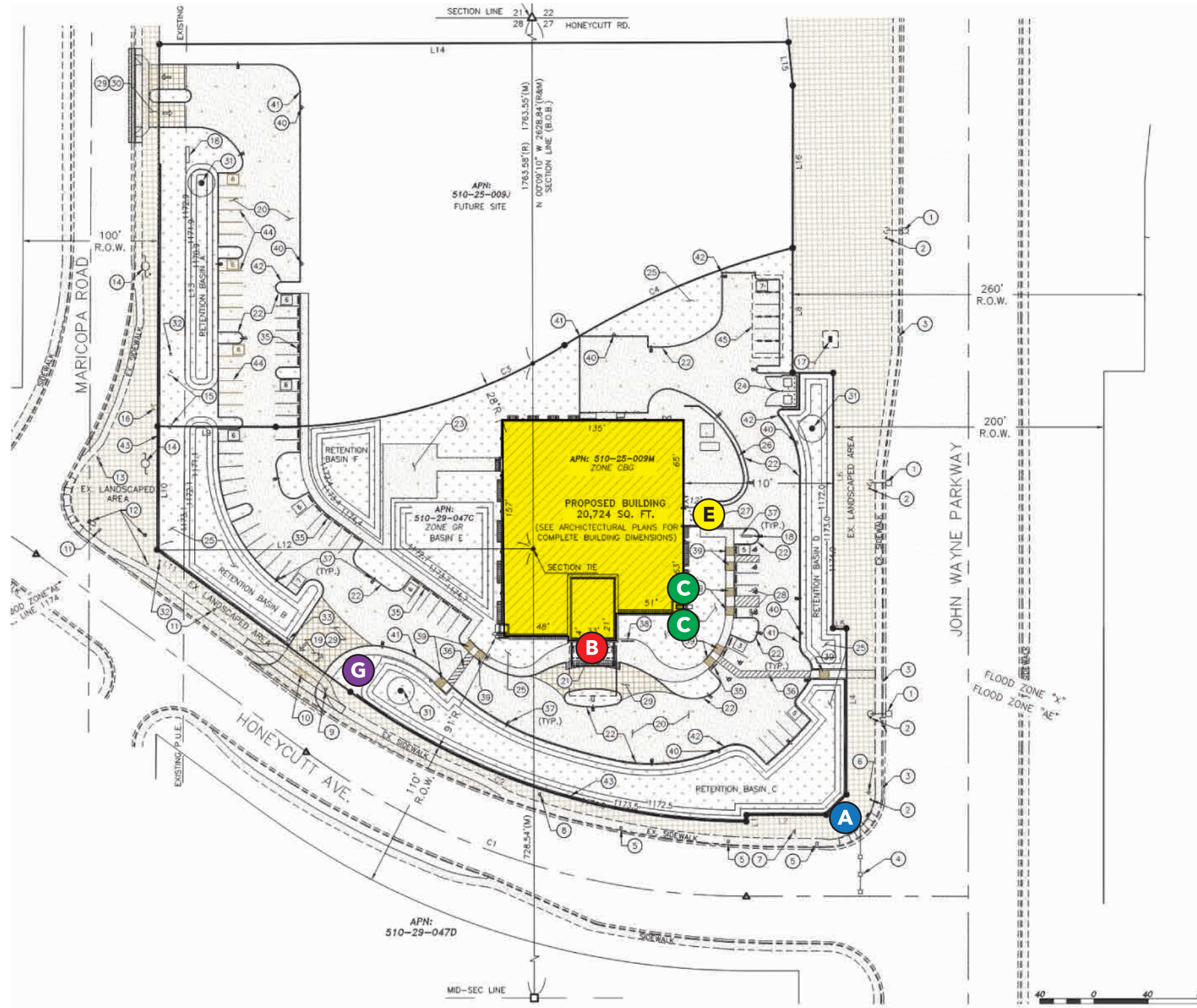
A. SUBMIT A COMPLETED SIGN PERMIT APPLICATION, AND COLORED RENDITIONS OF THE APPROVED SIGN PLANS TO THE CITY OF MARICOPA'S PLANNING AND ZONING DIVISION. THE PLANNING AND ZONING DIVISION WILL REVIEW THE SUBMITTAL FOR CONFORMANCE WITH THIS CSP.

C. AFTER THE PLANNING AND ZONING DIVISION HAS APPROVED THE SUBMITTAL, A BUILDING PERMIT MUST BE OBTAINED FROM THE CITY OF MARICOPA'S BUILDING AND SAFETY DIVISION.

EXCEPTIONAL COMMUNITY HOSPITAL

City of Maricopa
 Planning and Zoning Division
 Approved

2/3/2022, 5:43:24 PM
 CSP22-01



- A** Main Monument
- B** ECH Logo Wall Sign
- C** ER Wall Sign
- E** Ambulance Wall Signs
- G** Directional Monument



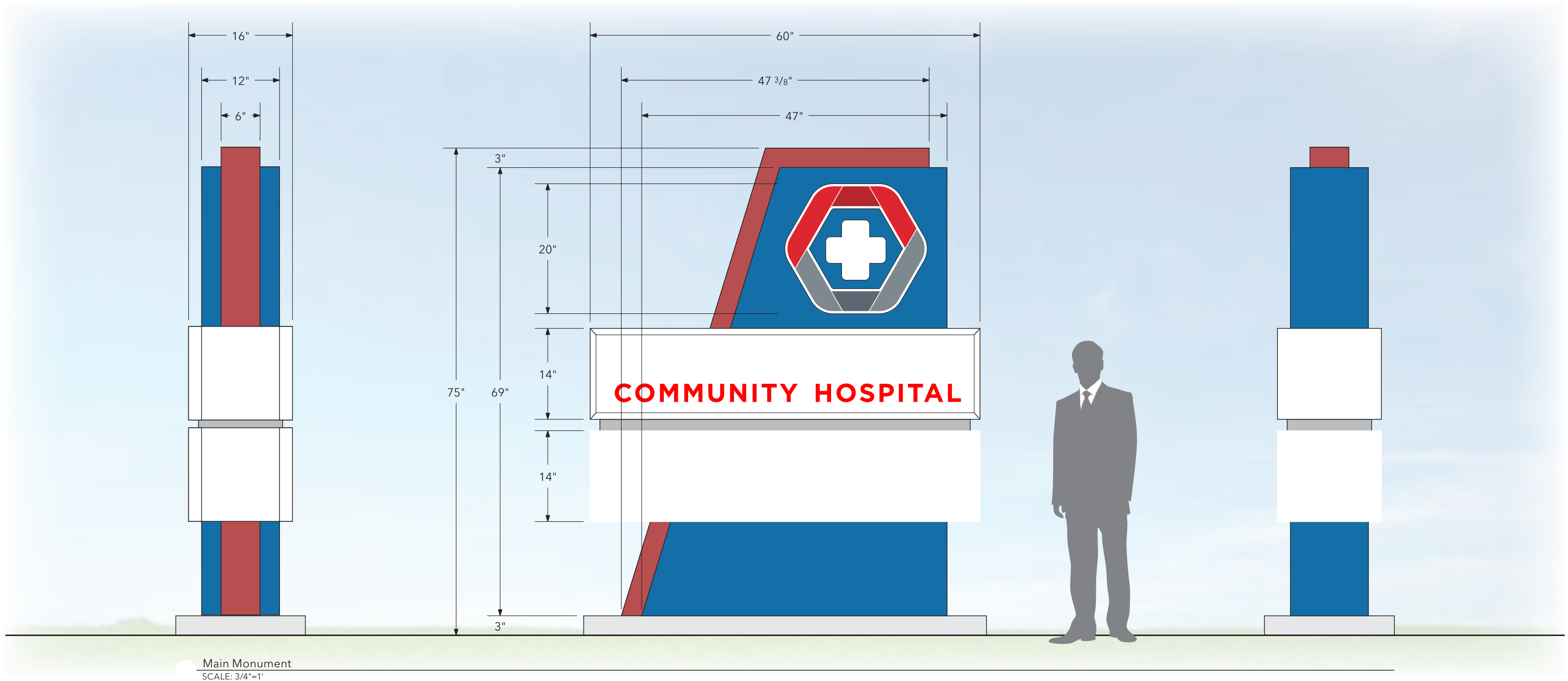
EXCEPTIONAL COMMUNITY HOSPITAL

City of Maricopa
Planning and Zoning Division
Approved

2/3/2022, 5:43:24 PM
CSP22-01

Internally Illuminated D/F Monument

Fabricated Aluminum Sign Cabinet with 3/16" Backed-Up Acrylic Logo
[2] D/F Acrylic Face Cabinets with Aluminum Retainers & Vinyl Graphics
Fabricated 1/8" Aluminum Accent Bar & Reveal



EXCEPTIONAL COMMUNITY HOSPITAL

City of Maricopa
Planning and Zoning Division
Approved

2/3/2022, 5:43:24 PM
CSP22-01

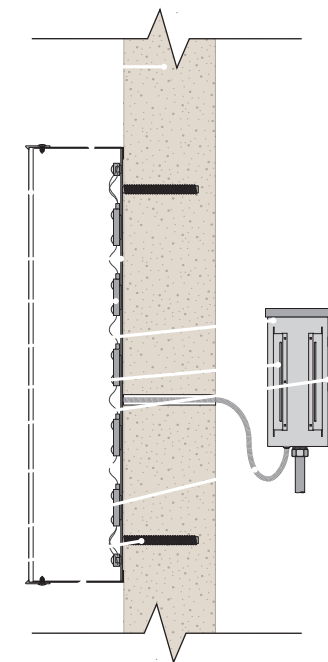


ECH Logo Wall Sign
SCALE: 1/2"=1'

Face-Lit Pan Channel Letters

- 5" Deep White Aluminum Coil Returns with 1" White Jewelite Trimcap
- White LED Illumination
- 3/16" #7328 White Acrylic with Digitally Printed Translucent Vinyl Faces

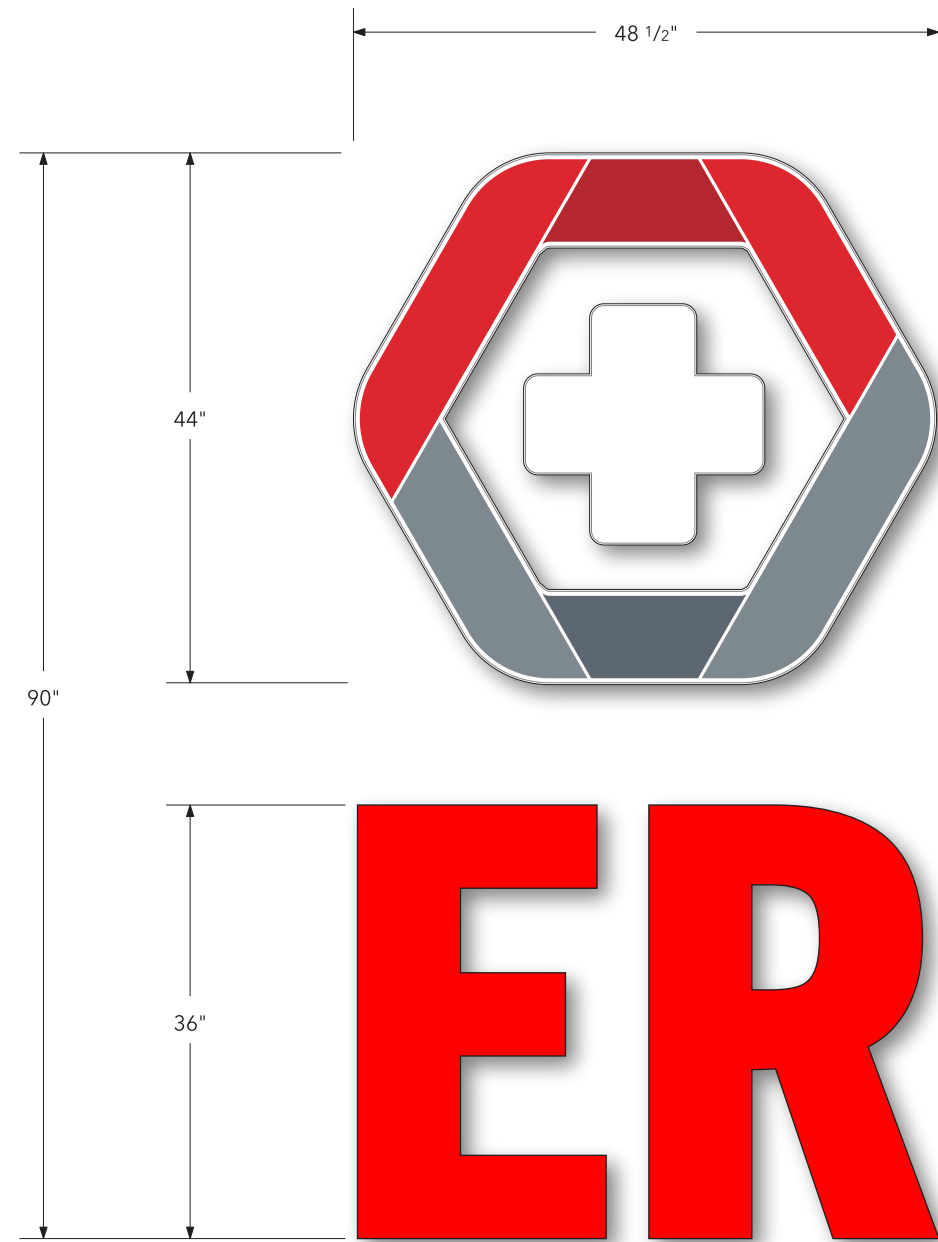
- Wall
- Riveted Aluminum Return
- Trimcap
- 3/16" Acrylic Face
- .063" Aluminum Back
- LED Modules
- Transformer Box
- Remote Low Voltage Trans.
- Disconnect Switch
- Low Voltage Wiring
- Conduit
- Mounting Studs
- Weep Holes



EXCEPTIONAL COMMUNITY HOSPITAL

City of Maricopa
Planning and Zoning Division
Approved

2/3/2022, 5:43:24 PM
CSP22-01

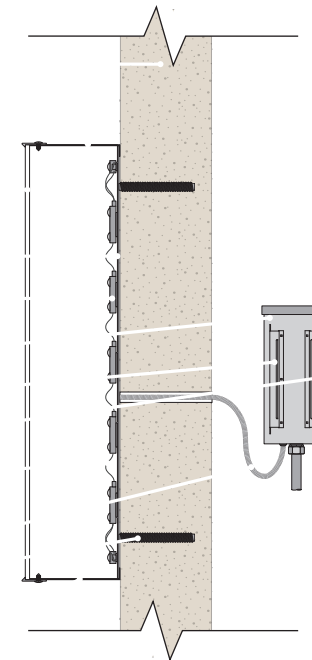


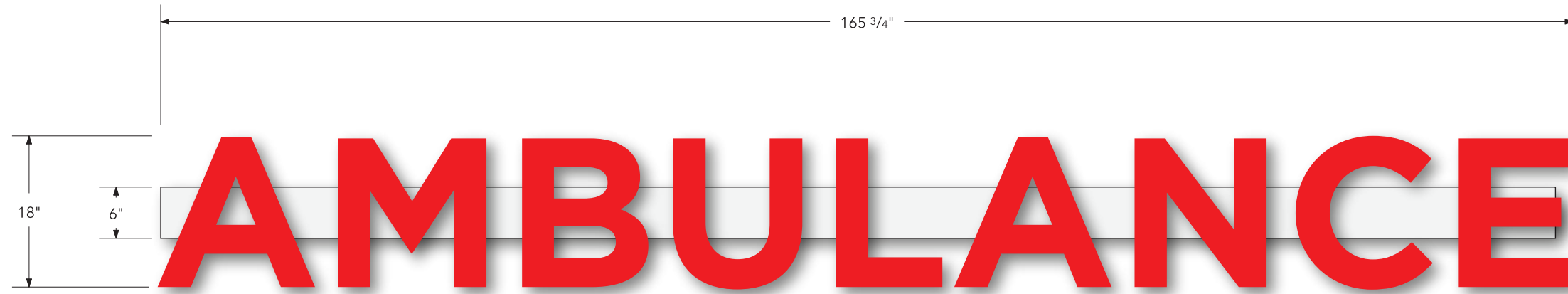
ER Wall Sign
SCALE: 3/4"=1' QTY [2]

Face-Lit Pan Channel Letters

- 5" Deep White Aluminum Coil Returns with 1" White Jewelite Trimcap
- White LED Illumination
- 3/16" #7328 White Acrylic with Digitally Printed Translucent Vinyl Faces

- Wall
- Riveted Aluminum Return
- Trimcap
- 3/16" Acrylic Face
- .063" Aluminum Back
- LED Modules
- Transformer Box
- Remote Low Voltage Trans.
- Disconnect Switch
- Low Voltage Wiring
- Conduit
- Mounting Studs
- Weep Holes



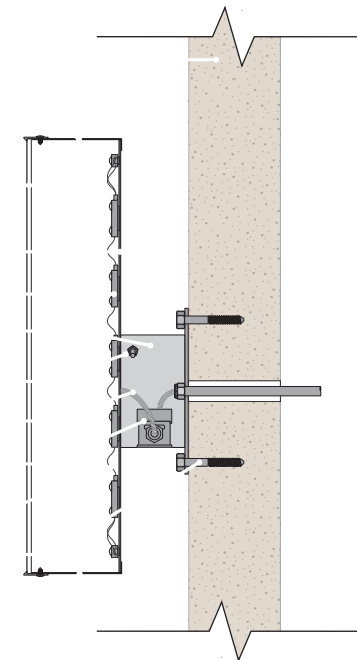


Ambulance Wall Sign
SCALE: 3/4"=1'

Face-Lit Pan Channel Letters

- 5" Deep White Aluminum Coil Returns with 1" White Jewelite Trimcap
- White LED Illumination
- 3/16" 2406 White Acrylic with 3M 3630-33 Red Vinyl Faces
- Mounted on Aluminum Raceway

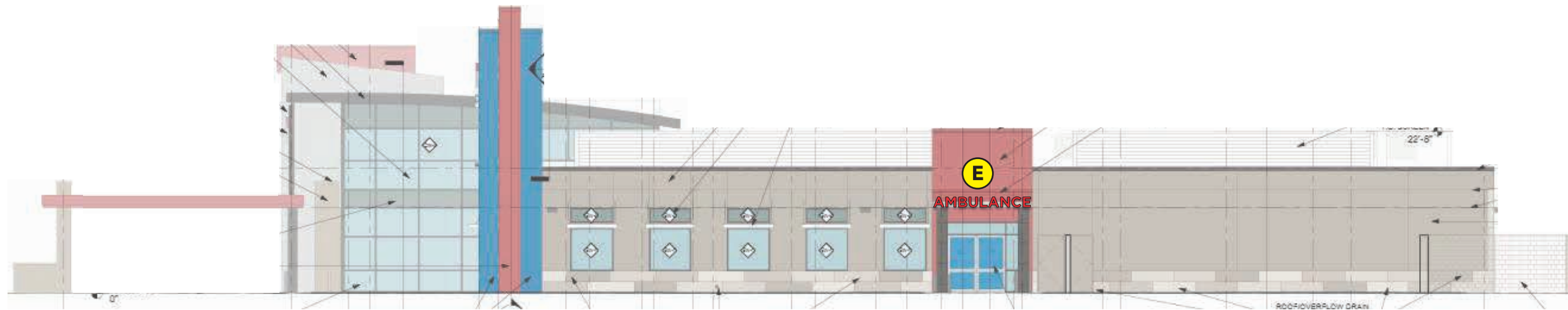
- Wall
- Riveted Aluminum Return
- Trimcap
- 3/16" Acrylic Face
- .063" Aluminum Back
- LED Modules
- Formed Raceway
- Disconnect Switch
- Conduit
- Remote Low Voltage Trans.
- Low Voltage Wiring
- Mounting Bolts
- Weep Holes



EXCEPTIONAL COMMUNITY HOSPITAL

City of Maricopa
Planning and Zoning Division
Approved

2/3/2022, 5:43:24 PM
CSP22-01



EXCEPTIONAL COMMUNITY HOSPITAL

City of Maricopa
Planning and Zoning Division
Approved

2/3/2022, 5:43:24 PM
CSP22-01

Internally Illuminated D/F Monument

D/F 3/16" Acrylic Face Sign Cabinet with Aluminum Retainers & Vinyl Graphics
Fabricated 1/8" Aluminum Accent Base Reveal

