

**REVERSE PAN CHANNEL
ALUMINUM LETTERS**

Scale:
1/2" = 1'-0"

Fabricate & install R.P.C. non-illuminated 1" deep aluminum letters painted MAP Black Anodic 41-335.

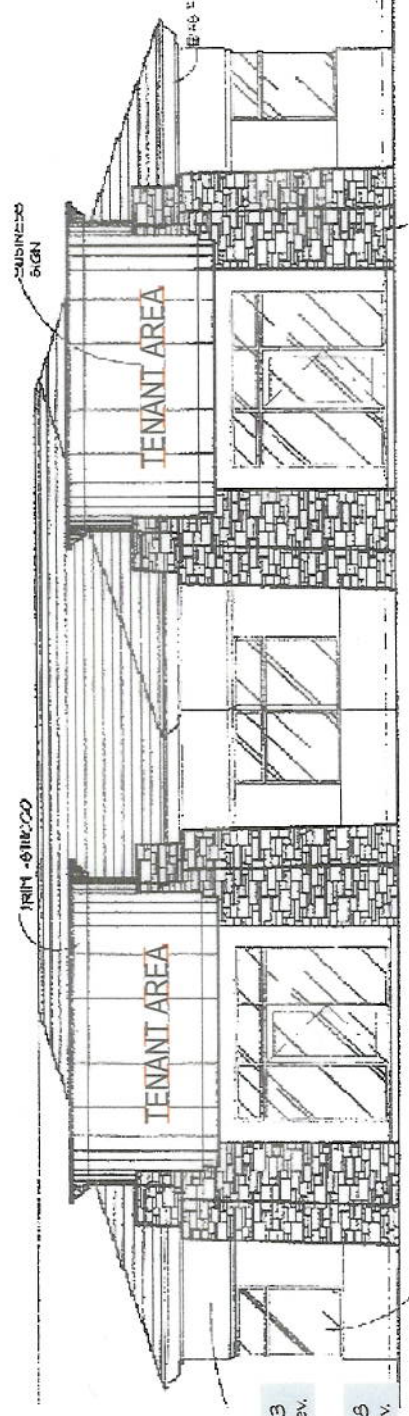
OPTION 1

Fabricate & install R.P.C. non-illuminated letters with 3" deep returns & 6500 white 30ma neon, allowed with Town of Gilbert & arizona approval.

OPTION 2



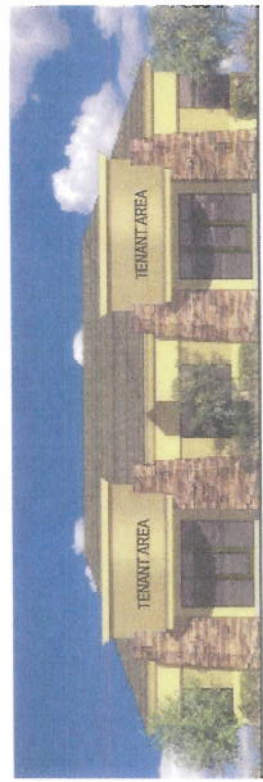
royal signco
 2621 N. 31st Ave.
 Phoenix, AZ 85018
 Fax: 602-278-6288
 E-mail (Art Dept):
 royalsign@royalstg.com



Building 3
North Elev.

Building 6
East Elev.

Scale:
1/8" = 1'-0"



Scale:
1/16" = 1'-0"

- Design Month: _____
- Client: _____
- Project Name: _____
- Address: _____
- City: _____
- State: _____
- Zip: _____
- Phone: _____
- Fax: _____
- E-mail: _____
- Notes: _____

Sheet Title: _____
 Location: _____
 Date: _____
 1/2" = 1'-0"
 Drawing Number: _____
04-1872

REVERSE PAN CHANNEL ALUMINUM LETTERS
Scale: 1/2" = 1'-0"

Fabricate & install R.P.C. non-illuminated 1" deep aluminum letters painted MAP Black Anodic 41-335.

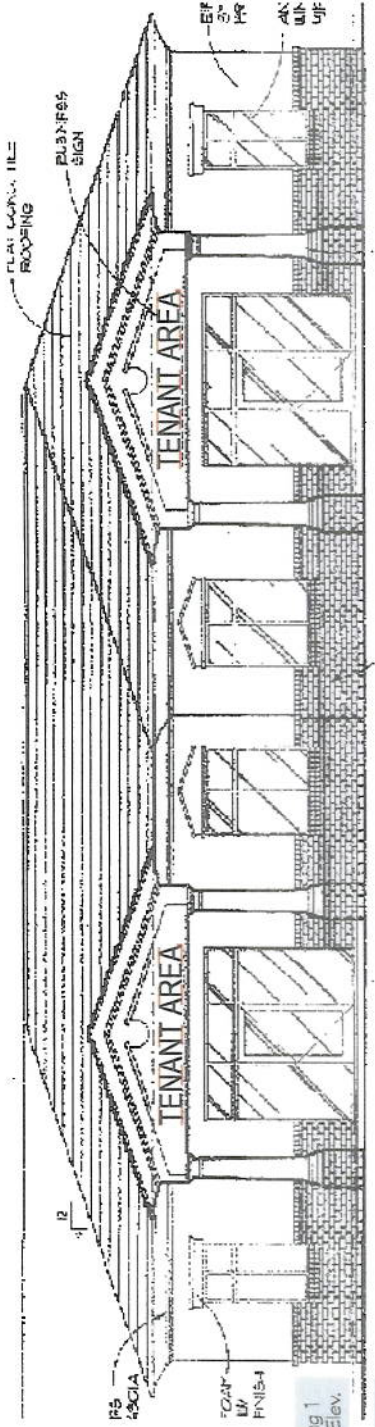
OPTION 1

Fabricate & install R.P.C. halo-illuminated letters with 3" deep returns & 6500 white 30ma neon, allowed with Town of Gilbert & ordered approved.

OPTION 2



royal signco
2031 N. 31st Ave.
Phoenix, AZ 85018
Tel: 602-278-6286
Fax: 602-278-0234
E-mail: Art@royal signco.com
royal sign@royal signco.net



Building 1
North Elev.
Scale: 1/8" = 1'-0"



Scale: 1/16" = 1'-0"

- 1. DEMONSTRATION
- 2. DEMONSTRATION
- 3. DEMONSTRATION
- 4. DEMONSTRATION
- 5. DEMONSTRATION
- 6. DEMONSTRATION
- 7. DEMONSTRATION
- 8. DEMONSTRATION
- 9. DEMONSTRATION
- 10. DEMONSTRATION
- 11. DEMONSTRATION
- 12. DEMONSTRATION
- 13. DEMONSTRATION
- 14. DEMONSTRATION
- 15. DEMONSTRATION
- 16. DEMONSTRATION
- 17. DEMONSTRATION
- 18. DEMONSTRATION
- 19. DEMONSTRATION
- 20. DEMONSTRATION
- 21. DEMONSTRATION
- 22. DEMONSTRATION
- 23. DEMONSTRATION
- 24. DEMONSTRATION
- 25. DEMONSTRATION
- 26. DEMONSTRATION
- 27. DEMONSTRATION
- 28. DEMONSTRATION
- 29. DEMONSTRATION
- 30. DEMONSTRATION
- 31. DEMONSTRATION
- 32. DEMONSTRATION
- 33. DEMONSTRATION
- 34. DEMONSTRATION
- 35. DEMONSTRATION
- 36. DEMONSTRATION
- 37. DEMONSTRATION
- 38. DEMONSTRATION
- 39. DEMONSTRATION
- 40. DEMONSTRATION
- 41. DEMONSTRATION
- 42. DEMONSTRATION
- 43. DEMONSTRATION
- 44. DEMONSTRATION
- 45. DEMONSTRATION
- 46. DEMONSTRATION
- 47. DEMONSTRATION
- 48. DEMONSTRATION
- 49. DEMONSTRATION
- 50. DEMONSTRATION
- 51. DEMONSTRATION
- 52. DEMONSTRATION
- 53. DEMONSTRATION
- 54. DEMONSTRATION
- 55. DEMONSTRATION
- 56. DEMONSTRATION
- 57. DEMONSTRATION
- 58. DEMONSTRATION
- 59. DEMONSTRATION
- 60. DEMONSTRATION
- 61. DEMONSTRATION
- 62. DEMONSTRATION
- 63. DEMONSTRATION
- 64. DEMONSTRATION
- 65. DEMONSTRATION
- 66. DEMONSTRATION
- 67. DEMONSTRATION
- 68. DEMONSTRATION
- 69. DEMONSTRATION
- 70. DEMONSTRATION
- 71. DEMONSTRATION
- 72. DEMONSTRATION
- 73. DEMONSTRATION
- 74. DEMONSTRATION
- 75. DEMONSTRATION
- 76. DEMONSTRATION
- 77. DEMONSTRATION
- 78. DEMONSTRATION
- 79. DEMONSTRATION
- 80. DEMONSTRATION
- 81. DEMONSTRATION
- 82. DEMONSTRATION
- 83. DEMONSTRATION
- 84. DEMONSTRATION
- 85. DEMONSTRATION
- 86. DEMONSTRATION
- 87. DEMONSTRATION
- 88. DEMONSTRATION
- 89. DEMONSTRATION
- 90. DEMONSTRATION
- 91. DEMONSTRATION
- 92. DEMONSTRATION
- 93. DEMONSTRATION
- 94. DEMONSTRATION
- 95. DEMONSTRATION
- 96. DEMONSTRATION
- 97. DEMONSTRATION
- 98. DEMONSTRATION
- 99. DEMONSTRATION
- 100. DEMONSTRATION

Sheet Title
Location
Scale: 1/2" = 1'-0"
Drawing Number: 04-1867

Victor Castillo

From: Rodolfo Lopez
Sent: Thursday, November 15, 2007 10:35 AM
To: Victor Castillo
Subject: FW: Sign Criteria for Maricopa Professional Village

This is what we talked about.

Rodolfo Lopez

Planner's Assistant

rlopez@cityofmaricopa.net

520-568-9098 ext. 274

-----Original Message-----
From: Daniel Green [mailto:daniel@sgmgt.com]
Sent: Thursday, July 19, 2007 9:59 AM
To: Rodolfo Lopez
Subject: RE: Sign Criteria for Maricopa Professional Village

Here's my best explanation of our role in this development.

Maricopa Professional Village is comprised of several condo buildings which are individually bought from the developer. These owners take care of the interior of their buildings while the Association that they're apart of maintains all the common area as well as the exterior of the buildings. S-G Management, the company I work for, was hired to run the Association for the owners. We pay all the common area bills, we maintain it, and we enforce the rules that are outlined for the Association. Part of the rules that we oversee are the building signs and enforcing the sign criteria that everyone agreed to abide by.

Sign companies send their proposals to S-G Management because we review each proposal, make sure they meet the sign criteria, and sign off on each one saying they are in compliance with the rules. The issue we had with Building 1 and their colored signs was the owner went behind the Association and told his sign company that they didn't need approval from the Association. We don't blame the City of Maricopa for approving his sign because the owner knew better and is in the process of changing his sign. I hope this helps clear things up a bit on what S-G Management does and how we're involved with Maricopa Professional Village.

Best Regards,

Danny Green
Property Manager

-----Original Message-----
From: Rodolfo Lopez [mailto:rlopez@cityofmaricopa.net]
Sent: Wednesday, July 18, 2007 4:13 PM
To: Daniel Green
Subject: RE: Sign Criteria for Maricopa Professional Village

Well the thing is that when we get sign permits to review, the landlord approval letter are being signed by the same person putting up the sign.

That is why I asked Mike to request a sign letter from the property management

Rudy Lopez

Also this is what we are asking, for now on any signs within the Professional Village we would need a sign letter from the property management association, stating that the sign is approved by management. This would resolve a lot of issues and get the turn around time in sign permits, faster.

So all signs are to be 1.5' x 12', no matter what?

I didn't notice the 1.5' x 12' diagram.

Apoloigize, I see it

Subject: RE: Sign Criteria for Maricopa Professional Village

To: Daniel Green

Sent: Monday, July 16, 2007 1:36 PM

From: Rodolfo Lopez [mailto:Rlopez@cityofmaricopa.net]

-----Original Message-----

-Danny

I've been signing the sign proposals as they come in and emailing them back. Is this enough for the city of Maricopa?

The biggest issue we have is making sure the sign meets one of the two following options. Either the sign is made by 1" deep reverse pan channel aluminum letters painted MAP Black Anodic 41-355, or halo-illuminated letters with 3" deep returns and 6500 white 30ma neon. Anything other than that requires a meeting of the Board of Directors for them to review it and approve it. The size isn't set in stone. Our biggest problem/concern is making sure the sign letters are one of the two options outlined above.

Subject: RE: Sign Criteria for Maricopa Professional Village

To: Rodolfo Lopez

Sent: Tuesday, July 17, 2007 4:01 PM

From: Daniel Green [mailto:danielg@sgmmt.com]

-----Original Message-----

520-568-9098 ext. 274

rlopez@cityofmaricopa.net

Planner's Assistant

Rudy Lopez

Thanks,

And if you don't mind could please describe your role in the process of these sign proposals. More of how you explained it to me on the phone. I just wasn't to have the correct procedure that you follow documented.

Also what property management is the professional village being run by?

As a department we will temporarily be using the sign criteria that you had provided me with. We will use that as a guideline and if we where to have any questions or concerns we may contact the property management. Would this be ok?

would allow us to prevent us from approving a sign that later we find out, it's being taken down, due to color. association, confirming their authorization for the specific proposed sign. It helps our department out and it make these permits go out quickly. Having this type of authorization

Planner's Assistant

rlopez@cityofmaricopa.net

520-568-9098 ext. 274

-----Original Message-----

From: Daniel Green [mailto:danielg@sgmgt.com]
Sent: Friday, July 13, 2007 2:05 PM

To: Rodolfo Lopez

Subject: Sign Criteria for Maricopa Professional Village

Rudy,

Here are some sample sign criteria for Maricopa Professional Village.

Regards,

Danny Green